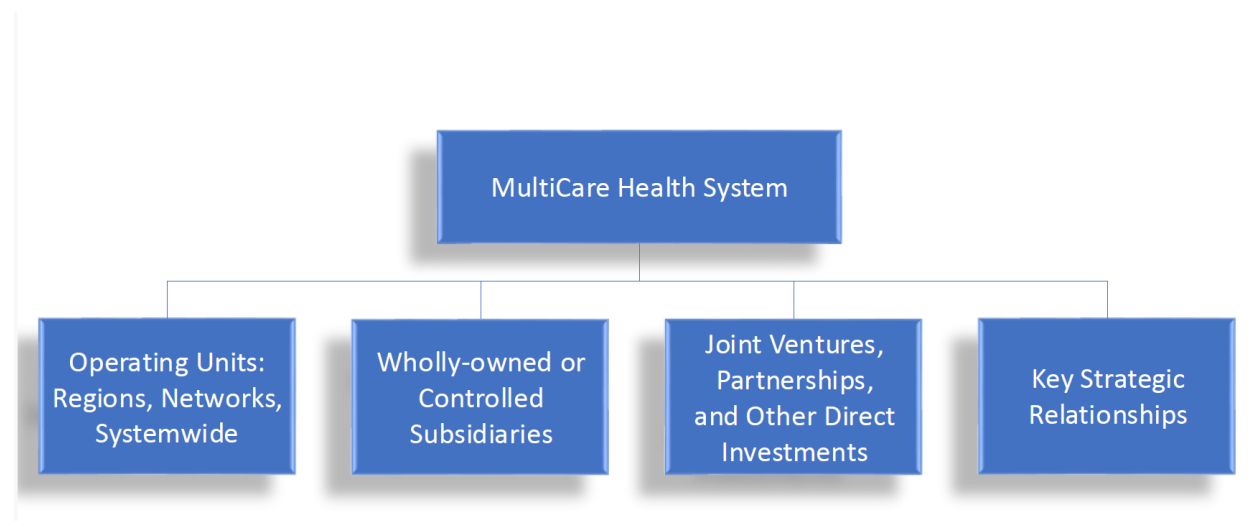


Pre-Closing Organizational Chart  
PUBLIC



Operating Units   Regions			
<b>Capital Pacific Region</b> <ul style="list-style-type: none"> <li>Capital Medical Center / OCED</li> <li>Capital Physicians</li> </ul>	<b>Inland Northwest Region</b> <ul style="list-style-type: none"> <li>Deaconess Hospital / OCED</li> <li>Valley Hospital</li> <li>Rockwood Clinic</li> </ul>	<b>Mary Bridge</b> <ul style="list-style-type: none"> <li>Mary Bridge Children's Hospital and Health Network</li> <li>Mary Bridge Children's Pediatrics</li> <li>Woodcreek Pediatrics by Mary Bridge</li> <li>Treehouse</li> <li>Pediatrics NW</li> </ul>	
<b>South Puget Sound</b> <ul style="list-style-type: none"> <li>Auburn Medical Center</li> <li>Covington Medical Center</li> <li>Good Samaritan Hospital / OCEDs<sup>2</sup></li> <li>Tacoma General &amp; Allenmore Hospitals / OCEDs</li> <li>Gig Harbor Multi-Specialty Medical Center</li> <li>MultiCare Medical Associates</li> <li>Puyallup Ambulatory Surgery Center</li> <li>VP Surgery Center of Auburn</li> <li>Surgery Center of Silverdale<sup>1</sup></li> <li>Neospine<sup>1</sup></li> </ul>	<b>North Sound Region</b> <ul style="list-style-type: none"> <li>Overlake Medical Center / OCED</li> <li>Overlake Clinics</li> <li>Overlake Surgery Center<sup>1</sup></li> </ul>		
	<b>Yakima Valley</b> <ul style="list-style-type: none"> <li>Yakima Memorial Hospital / OCED</li> <li>Primary &amp; Specialty Care Clinics</li> <li>MultiCare Orthopedics NW</li> <li>MultiCare Endoscopy Center Yakima</li> <li>MultiCare Surgery Center at Ridgeview</li> </ul>	<b>Behavioral Health</b> <ul style="list-style-type: none"> <li>Good Samaritan Behavioral Health</li> <li>Navos<sup>1</sup></li> <li>Greater Lakes Mental Healthcare<sup>1</sup></li> <li>Wellfound<sup>1</sup></li> </ul>	

Pre-Closing Organizational Chart  
PUBLIC

