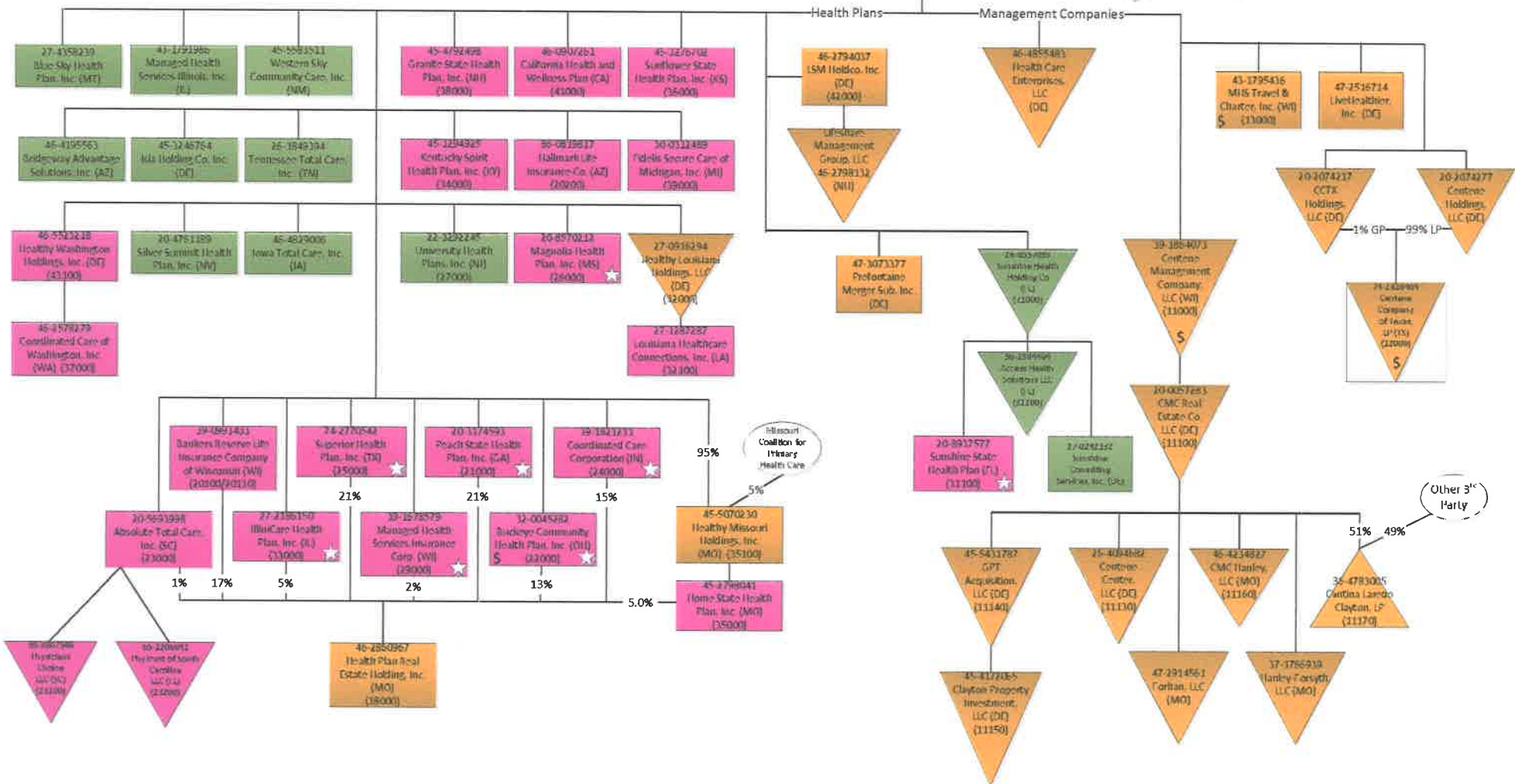


Centene Corporation & Subsidiaries
Organizational Chart
 Last Updated: June 30, 2015
 Page 1 – Health Plan Segment

42-1406317
Centene Corporation (DE)
(10000)

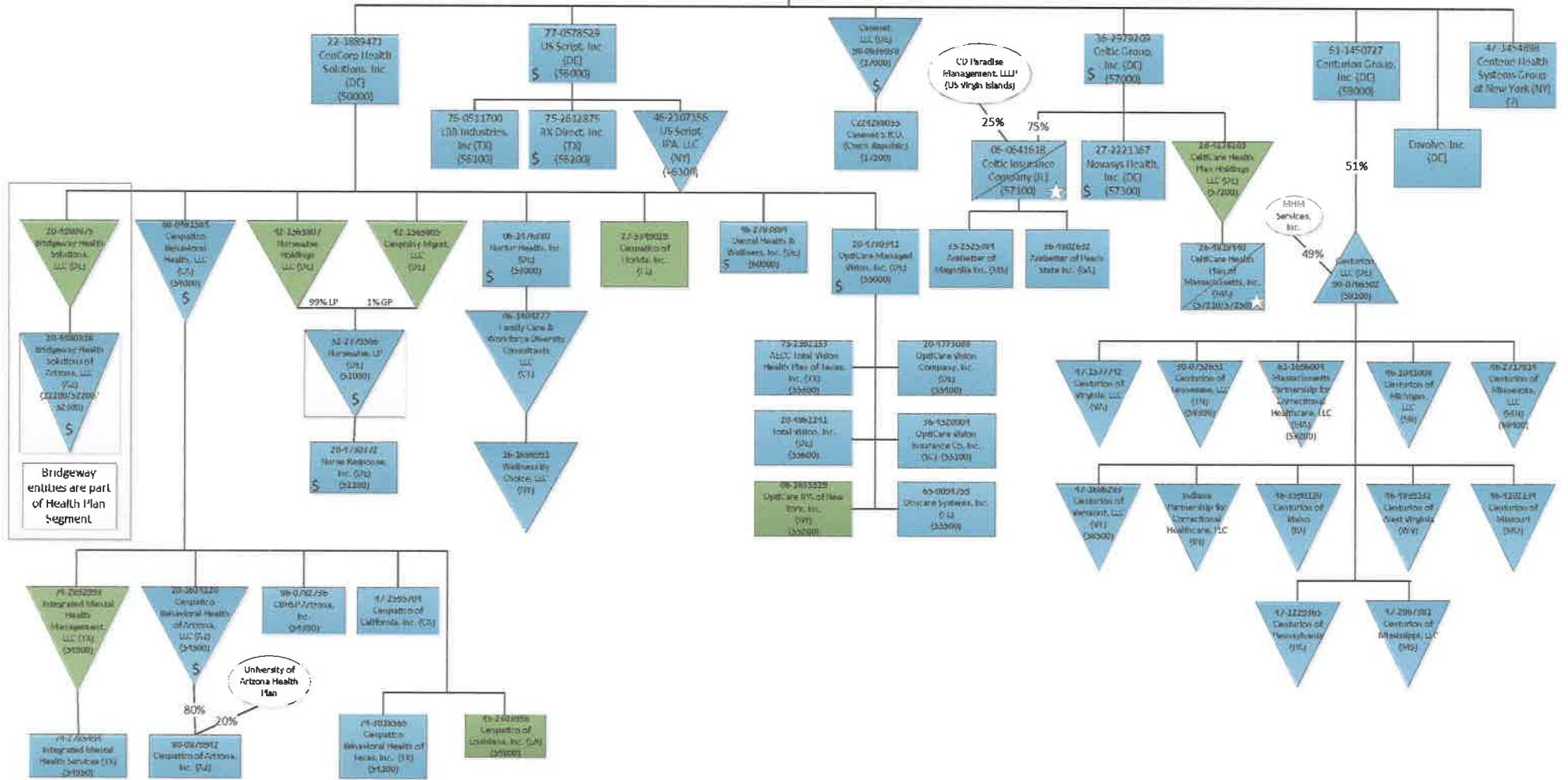
International Segments (p1)
 Acaria Health Segments (p2)
 USMM Companies (p4)
 Specialty Companies (p2)



Centene Corporation & Subsidiaries
Organizational Chart
Last Updated: June 30, 2015
Page 2 – Specialty Segment



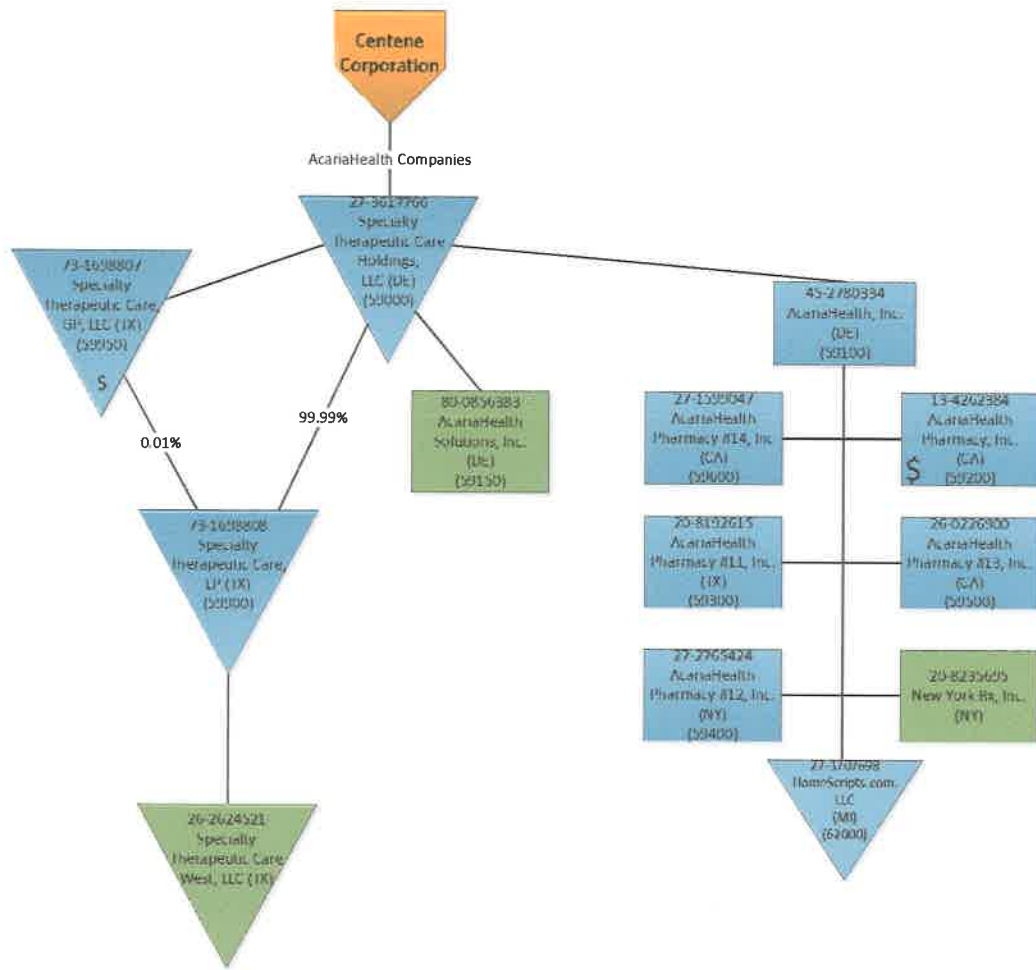
Specialty Companies



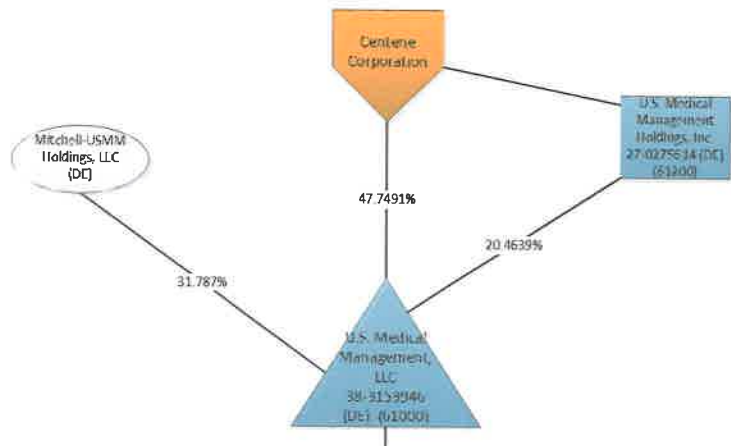
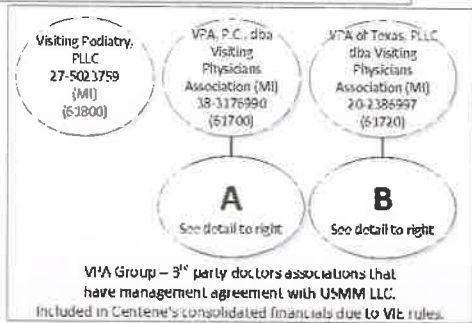
Bridgeway entities are part of Health Plan Segment

University of Arizona Health Plan

Centene Corporation & Subsidiaries
Organizational Chart
Last Updated: June 30, 2015
Page 3 – AcariaHealth Specialty Segment



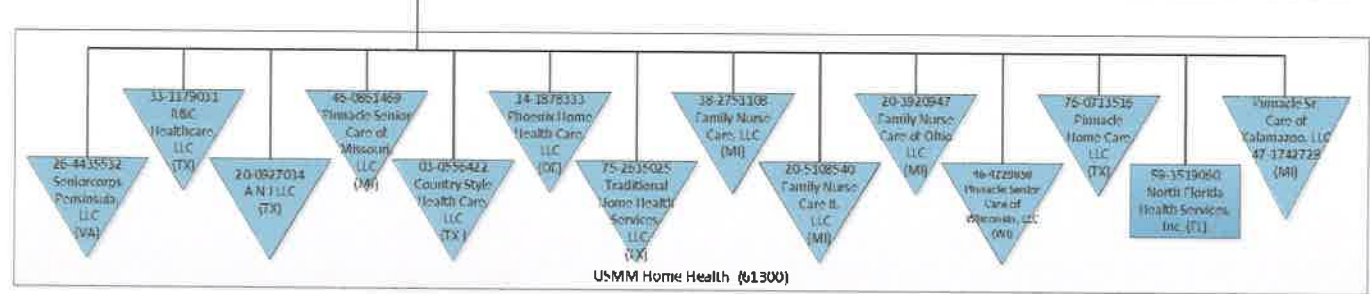
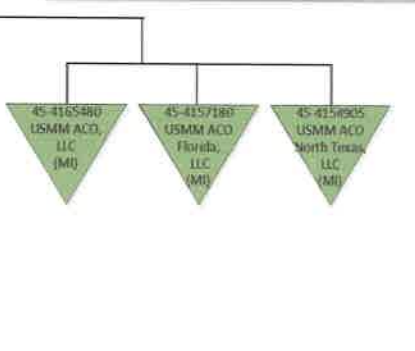
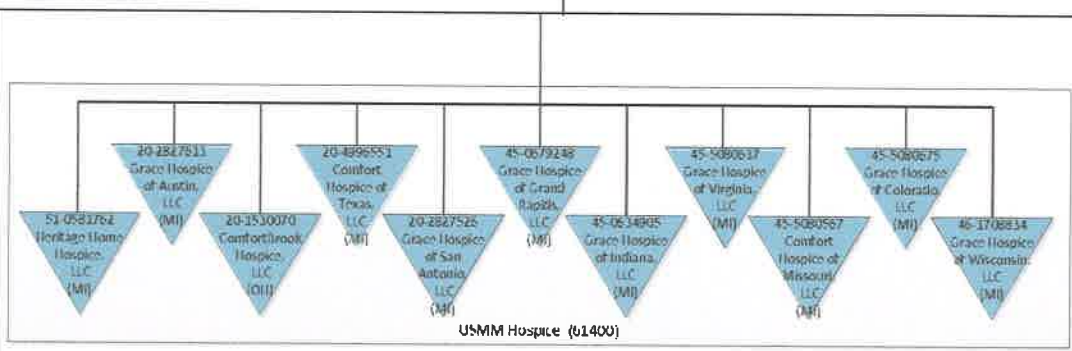
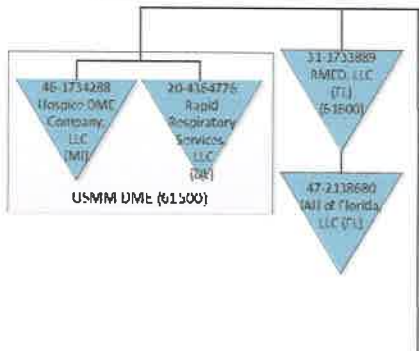
**Centene Corporation & Subsidiaries
Organizational Chart
Last Updated: June 30, 2015
Page 4 – U.S. Medical Management**

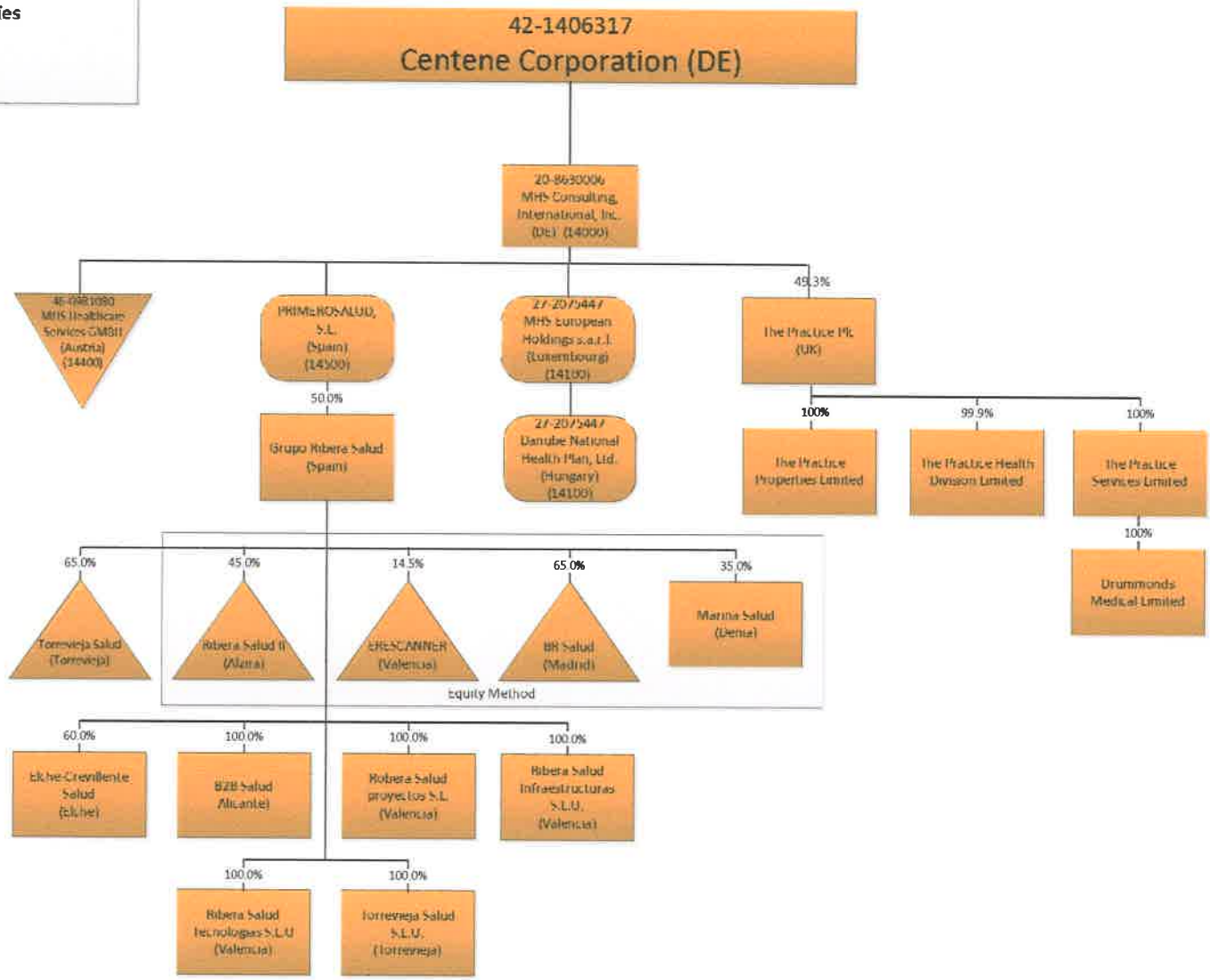


VPA Subsidiary Details (from left)














A – VPA, PC
IAH of Michigan, PLLC (MI) 47-2159305
IAH of Wisconsin, PLLC (MI) 47-2146160

B – VPA of Texas
IAH of Texas, PLLC (MI) 35-2519608
Advantechs Imaging Services (TX) -dba VPA Diagnostics 36-4539790





Legend

	Single-member LLC		Corporate
	LLC taxed as Corporation		Health Plan Segment
	Partnership		Specialty Segment
	C-Corporation		HI/Specialty Segment
	Controlled Foreign Corporation		Inactive
	Third Party		
	Includes Marketplace		
	Payroll Company		

- Not for Profit Companies**
- (1) The Centene Foundation for Quality Health Care (MO) – sole member – Centene Corporation (FEIN #20-1516497)
 - (2) The Centene Charitable Foundation (MO) – sole member – Centene Corporation (FEIN #20-1298192)
 - (3) Cenpatico Foundation (TX) (FEIN #27-1252360)